



# OPTIONS

## 2020

# STUDENT INFORMATION / SUPPORT SERVICES

This year's Leaving Certificate, Leaving Certificate Applied (LCA) and the Leaving Certificate Vocational Programme (LCVP) will be provided to students as close as possible to the normal Leaving Certificate results day (usually in August), via the calculated grades system. Students will have access to their provisional grades and later stages of the process, such as the appeal process, through the Calculated Grades Student Portal. This is available at [gov.ie/leavingcertificate](http://gov.ie/leavingcertificate)



## HOW WILL GRADES BE CALCULATED?

### Step 1: Estimation of Scores and Class Ranking

The subject teacher will estimate the percentage mark the candidate is likely to have achieved, and estimate the class ranking of each candidate in order of predicted level of achievement for each subject.

### Step 2: In-school alignment by Teachers

Subject teachers review the estimated marks and rankings of students. Teachers finalise these marks and rankings following the alignment process.

### Step 3: Oversight of Marks and Rankings by School Principal

The principal reviews estimated marks and rankings, and signs off on behalf of the school. The principal may return the estimated marks and rankings to the relevant group of teachers for further consideration.

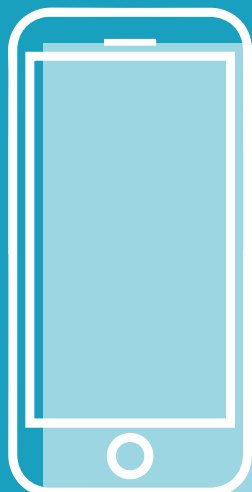
### Step 4: National Standardisation by Department of Education & Skills

Marks and rankings submitted by schools will be examined and may be adjusted to ensure a common national standard is applied.

## THE CAO & CALCULATED GRADES STATUS

Calculated Grades will have the same status as Leaving Certificates awarded to students in previous years and will therefore be recognised for employment and further study. Students' Calculated Grades will be transferred directly to the Central Applications Office (CAO). The CAO timelines will run as close as possible to normal, to allow students to take up third level offers, further education or work etc. Further information regarding Calculated Grades can be accessed via [examinations.ie](http://examinations.ie).

**IMPORTANT:** While you will be offered your Calculated Grades, you will alternatively have the option to sit standard Leaving Certificate exams at a later date. At this point it is not possible to confirm the date. These examinations will be provided as soon as it is safe and practicable to do so.



### HELPLINE

The National Parents Council helpline (1800 265 165) can also be contacted following the issue of results and CAO offers.

The dates and times for the 2020 Helpline are as follows:

Monday 7th September	11am – 8pm
Tuesday 8th September	11am – 8pm
Wednesday 9th September	11am – 2pm
Thursday 10th September	11am – 2pm
Friday 11th September	12pm – 8pm
Saturday 12th September	11am – 5pm

# YOUTH INFORMATION - ONLINE ASSISTANCE

New YIChat service ([ymca-ireland.net/question](http://ymca-ireland.net/question))

In response to the new system of calculated grades, YMCA Ireland's Advocacy & Youth Information Service will be offering online support and advice to students receiving their Leaving Cert results this September. YIChat, a new national Youth Information Chat service, will be open from 12:00-21:00 on Monday 7th and Tuesday 8th September during the Leaving Cert results, and 12:00-21:00 on Friday 11th when the CAO offers are released.

YIChat is an easy to use chat service that works just like WhatsApp or Facebook Messenger. It helps to provide students and parents with advice and answers to their questions during these unprecedented times. The service is staffed by trained Youth Information Officers, who can help students and parents discuss their situation and talk through their options.

Youth Information Chat is an online chat service operated by YMCA Ireland's Advocacy and Youth Information Service together with Youth Information Centres from Youth Work Ireland, Crosscare and by Ireland's Youth Information website, SpunOut.ie.

The Youth Information Chat service is also available every Monday to Friday, 16:00 - 20:00 or you can leave a message outside of those hours and receive a reply by email. The service is open to 16 to 25 year olds, parents, and people who work with young people.



## POINTS

POINTS	HIGHER LEVEL GRADE (PERCENTAGE)	ORDINARY LEVEL GRADE (PERCENTAGE)	POINTS
100	H1 (90 - 100)		
88	H2 (80 < 90)		
77	H3 (70 < 80)		
66	H4 (60 < 70)		
56	H5 (50 < 60)	O1 (90 - 100)	56
46	H6 (40 < 50)	O2 (80 < 90)	46
37	H7 (30 < 40)	O3 (70 < 80)	37
0	H8 (0 < 30)	O4 (60 < 70)	28
		O5 (50 < 60)	20
		O6 (40 < 50)	12
		O7 (30 < 40)	0
		O8 (0 < 30)	0

### MATHS BONUS POINTS

In Higher Level Maths, for H6 grades and above, 25 additional bonus points will be awarded to the 46 points already awarded for a H6 grade.

### LCVP GRADES

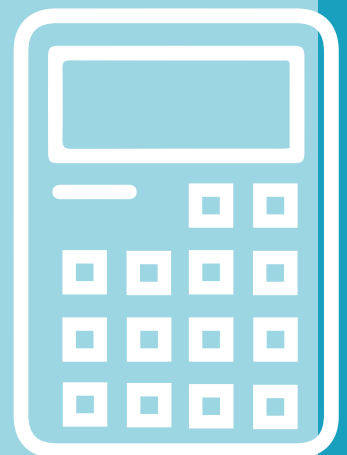
Distinction: 66 points  
Merit: 46 points  
Pass: 28 points

### FOUNDATION LEVEL GRADES

F1: 20 points  
F2: 12 points

### IMPORTANT:

HEIs award points for results in LCVP Link Modules, in place of a 6th Leaving Cert subject. However, not all HEIs count LCVP as meeting eligibility requirements in regard to passing subjects. Applicants should refer to HEI literature for full details.



### CAO POINTS CALCULATOR

If needed, a Points Calculator is available on the CAO website at [www.cao.ie](http://www.cao.ie)

### CONDITIONS REGARDING POINTS

- The 6 best results, in recognised subjects, in one Leaving Certificate Examination will be counted for points computation.
- One sitting only of the Leaving Certificate will be counted for points purposes.
- With certain subjects, (e.g. Home Economics [General], Foundation Level Maths or Foundation Irish) some HEIs may not award the points shown above. If in doubt, check with the Admissions Office of the appropriate HEI.
- Remember, you must first meet the minimum entry requirements in order to be considered for entry to a course. The bonus points are included in the overall points calculation only when Mathematics is one of the applicant's best six subjects following the addition of the bonus.

# CAO PROCESS



## 1; Transfer of Grades to CAO:

Students' calculated grades will be transferred directly to the CAO, in the same way that examination results usually are. The CAO timelines will run as close as possible to normal to allow for students to take up offers and to transition to third level, further education or work etc.

## 2; Accepting an offer:

Accepting an offer has not changed significantly this year. If you receive an offer and you choose to accept this offer, you can do so online. If you choose to accept your offer you must do so by the reply date indicated on the Offer Notice.


## 3; Available places.

If HEIs have any new courses that open for application after the Change of Mind deadline, or if any places remain unfilled in particular courses after all offers have been made, and the waiting lists of applicants meeting minimum entry requirements have been exhausted, such vacancies will be advertised.

## DEFERRING OFFERS

If you wish to defer an offer of a college place, you do not accept your offer. Instead you must e-mail or write to the admissions office of the appropriate HEI immediately.

# APPEAL PROCESS



Students wishing to avail of the facility to appeal their Calculated Grades, will be able to avail of this service via the Calculated Grades Student Portal. This is available at [gov.ie/leavingcertificate](http://gov.ie/leavingcertificate).

- The appeal will check that your school data was correctly transferred to the Department and that it was correctly processed by the Department.
- If you are still unhappy at the end of this process, you can get verification of the Department's processes by independent appeal scrutineers.
- Under the calculated grades system, the estimated percentage mark provided by the teacher cannot be reviewed. If there are subjects you are unhappy with, you can sit a written Leaving Certificate exam in the subject(s) when this becomes possible.
- If your exam grade is higher than your calculated grade, your results for that subject will be amended. If the higher grade means you would have been entitled to a higher offer of a CAO course, you will be facilitated in taking up that place as soon as practicable.

## IF YOU RECEIVE A HIGHER GRADE AFTER APPEAL:

- Students who receive an upgraded CAO place following Stage 1 of the appeals process may be able to take up their place in the 2020/2021 academic year.
- Students who are successful at the Independent Appeal Scrutineer stage, and who receive an improved CAO offer at that stage, will receive a deferred offer to start their course in the 2021/22 academic year.
- Students who opt to sit the Leaving Certificate examinations later in the year and who receive an improved CAO offer on foot of these results will also receive a deferred college offer to start their course in the 2021/22 academic year.
- If a candidate who has started the first year of a course becomes entitled to a higher CAO offer and chooses to accept the same in the following academic year, attendance for the first year on the new course would remain eligible for free fees and SUSI funding as appropriate.

## HEAR & DARE APPLICANTS INFO



At this time, all DARE and HEAR related dates listed on cao.ie, accesscollege.ie and in promotional materials remain unchanged by the recent announcement on the use of Calculated Grades. These dates will remain unchanged until further notice.

All participating DARE and HEAR colleges will reduce points and make offers for courses in exactly the same way once an applicant has enrolled for required subjects etc and fulfilled other requirements for DARE / HEAR eligibility.

Applicants can refer to the DARE / HEAR section of the cao.ie website for more details.

### IMPORTANT NOTES (Specific HEI's / Courses)

- NCAD does not award points for Leaving Certificate or other examinations in the case of their restricted courses. Consult NCAD literature for details.
- Applicants for undergraduate medicine courses should consult the Student Resources section of the CAO website and click on the Entry to Medicine tab.

## HIGHER EDUCATION LINKS SCHEME (HELS)

Under QQI (Quality & Qualifications Ireland)

The Higher Education Links Scheme (HELS) gives learners the opportunity to use their QQI Level 5 or 6 major award to apply, through the CAO, for a place in the first year of a higher education programme. Linked awards, special requirements and available higher education programmes are published by admission offices of the individual higher education institutions on [www.cao.ie](http://www.cao.ie).

## COLLEGE START DATE?

Dates for the commencement of the college year are still to be confirmed. It will be late September or early October. HEI's are in contact with the Department on various issues regarding enrolment and courses for the 2020/2021 academic year.



## COLLEGES FOR REPEAT LEAVING CERTIFICATE

**College of Commerce** - Morrison's Island, Cork (Non-private)  
Tel: (021) 4223801 / Mail: [mdebarra@ccoc.ie](mailto:mdebarra@ccoc.ie)  
Web: [corkcollegeofcommerce.ie](http://corkcollegeofcommerce.ie)

**Bruce College** - Audley House, St. Patrick's Hill, Cork.  
Tel: (021) 450 4122 / Mail: [susan@brucecollege.ie](mailto:susan@brucecollege.ie)  
Web: [brucecollege.ie](http://brucecollege.ie)

**Hewitt College** - 24, Patrick's Hill, Cork.  
Tel: (021) 455 0430 / Mail: [admin@hewittcollege.net](mailto:admin@hewittcollege.net)  
Web: [hewittcollege.ie](http://hewittcollege.ie)

**Deane College** - Fitzgerald House, 73-75 Grand Parade, Cork.  
Tel: (021) 427 4722 / Mail: [deanecollege@eircom.net](mailto:deanecollege@eircom.net)  
Web: [deanecollege.ie](http://deanecollege.ie)

# STUDYING IN NI, UK & EUROPE

UK & Northern Ireland Information for UCAS Undergraduate applicants



## Offers and decisions (Post COVID-19 Restrictions)

The Department has been in contact with counterparts in the UK and across the EU to explain the position regarding the Leaving Certificate. Other countries are being asked for as much flexibility as possible for our students. This is also a common challenge in the UK and across the EU.

The restrictions put in place by the UK Government following the coronavirus outbreak, regarding the temporary suspension of unconditional offers or amending existing offers has now been lifted. Therefore UCAS applicants can now follow the progress of their application using the online system 'TRACK' ([ucas.com/undergraduate/after-you-apply](https://ucas.com/undergraduate/after-you-apply)).

UCAS will receive students' grades, as in previous years, from the relevant awarding bodies and pass them on to their chosen colleges. For students currently holding a conditional offer, these offers will become unconditional, as long as students meet offer conditions (usually related to grades). If your application is unsuccessful, you may use UCAS' Clearing system to find a college place.

## NOTE: What is Clearing?

Clearing matches applicants to university places that are yet to be filled. It's available to anyone who has made a UCAS Undergraduate application and doesn't hold any offers. Check the UCAS website for more info on Clearing procedures.

## IMPORTANT:

With regard to specific UK and NI Colleges, and potential changes to the delivery methods of their courses (re COVID-19 measures), it is advised that students stay up to date with the relevant University or College websites to see what adaptations they will be making. Make sure you're aware of any changes, know your rights and the information you should receive, before confirming your place.

## UCAS FEES:

The following fees may apply to Irish Students who wish to study in the UK:

**England** - Can charge students up to £9,250

**Scotland** - No fee\*

**Wales** - Can charge students up to £9,000

**Northern Ireland** - Can charge up to £4,395

\*If you take up residence in Scotland in order to study at a Scottish university or college, you will not have to pay tuition fees (as long as you meet the relevant resident criteria). Also, you will need to apply to the SAAS (Student Awards Agency Scotland) to have your tuition fees paid for you, as this is not automatic.

## TUITION FEE LOANS

You can apply for a Tuition Fee loan, which you only have to repay after you have graduated and are earning above a certain level.

## SUSI GRANTS FOR THE UK

It is also possible to apply for a maintenance grant in Ireland for approved undergraduate courses in the UK via the SUSI grant scheme. (see: [susi.ie](https://www.susi.ie))

## MORE INFO ON TUITION FEES & FUNDING FOR UK STUDY

You can find out more about tuition fees and funding available in your region by visiting <https://www.ucas.com/finance/finance-international-and-eu-students>

## you can also contact:

Student Finance Services (EU Students)  
Tel: 0141 243 3570 (Mon-Fri 8am to 6pm)  
Web: <https://www.gov.uk/student-finance/eu-students>  
Twitter: @SF\_England  
Facebook: facebook.com/SFEngland

The British Council, Ireland  
Tel: 01 676 4088 / Mail: [info@ie.britishcouncil.org](mailto:info@ie.britishcouncil.org)  
Web: [www.britishcouncil.ie/study-uk/scholarship-funding](http://www.britishcouncil.ie/study-uk/scholarship-funding) Twitter: @ieBritish  
Facebook: facebook.com/BritishCouncilIreland

The UK Council for International Student Affairs (UKCISA)  
Tel: +4420 7788 9214 (Mon-Fri 1pm to 4pm) / Mail: No mail service available / Web: [ukcisa.org.uk](http://ukcisa.org.uk)  
Twitter: @azBritish / Facebook: facebook.com/UKCISA/

UCAS Finance & Support  
See also [www.ucas.com/ucas/undergraduate/finance-and-support](http://www.ucas.com/ucas/undergraduate/finance-and-support)

## SUSI GRANTS FOR THE UK

It is also possible to apply for a maintenance grant in Ireland for approved undergraduate courses in the UK via the SUSI grant scheme. (see: [susi.ie](http://susi.ie))

You can find out more about tuition fees and funding available in your region by visiting <https://www.ucas.com/finance/finance-international-and-eu-students>

## STUDYING IN EUROPE:

### Impact of COVID-19 on studying abroad in Europe

**IMPORTANT:** The information below was obtained through Study.eu. As the COVID situation develops internationally, we recommend that you maintain regular contact with any European member state HEI where you may have been offered a place - This is to ensure you are up to date with the COVID protocols of the particular HEI, as well as the member state where it is situated, prior to travelling to said member state.

### How does the Corona pandemic affect studying abroad?

The COVID-19 pandemic has affected the higher education sector in many ways. If you are planning to enrol in a degree programme abroad, it is important that you follow developments closely - both in your home and your destination country. Here are some of the effects we have already seen:

**No face-to-face teaching or exams:** To reduce the spread of coronavirus, many universities have suspended any on-campus activities like lectures. Where possible, classes are being held online.

**Restrictions on immigration:** Certain countries have restricted entry, and only nationals or permanent residents are allowed in unless there are important reasons. So you should monitor developments closely and plan ahead.

**Admission procedures and application deadlines:** As the pandemic is also affecting administration, universities may have made changes to their admissions processes, application deadlines and semester start dates. So you should check the website of your desired institution(s) regularly for any updates.

If you cannot meet eligibility criteria by the application deadline because of effects of the COVID-19 pandemic, please reach out to the admissions office of the university you want to apply to. It may be better to submit an incomplete application.



# ALTERNATIVES TO THE CAO/UCAS ROUTE

## APPRENTICESHIPS

Craft Apprenticeships: Train to become a plasterer or electrician etc. While you are training, you work with an employer learning the necessary skills and receive a wage. Most apprenticeships last 4 years. You must be at least 16 years of age and have a minimum of grade D in any five subjects in the Junior Certificate or equivalent. However, employers may require additional minimum qualifications.

Given that the Junior Certificate / Cycle examinations will not now take place in 2020, and to avoid any unfair disadvantage for young people wishing to access craft apprenticeships, it has been determined that the 2020 State Certificate and the School Report provided to Junior Certificate students will be deemed to be an 'approved equivalent' as per the eligibility requirements.

Apprentices may present their 2020 State Certificate and accompanying School Report to employers, training providers and SOLAS Authorised Officers, to confirm their eligibility for a craft apprenticeship. This arrangement specifically applies to those learners who were due to complete the Junior Certificate / Cycle in 2020. It does not apply for learners who complete or completed the Junior Certificate / Cycle in any other year.

New Apprenticeships: NFQ Level 5 to 9 is offered through the individual industries in areas as diverse as: financial services, accounting, medical devices and software development. Professional bodies, such as the Accounting Technicians of Ireland / ESB and Insurance Practitioners of Ireland, have programmes to link you to the employers & relevant academic institutes. Visit [www.solas.ie](http://www.solas.ie) and click on apprenticeships.

## SOLAS

Solas offers Further Education and Training programmes. Part-time, full-time, day, evening and online courses. Programmes include Apprenticeships, Traineeships, Skills to Advance, eCollege and the European Globalisation Fund. For more info visit [www.solas.ie](http://www.solas.ie)

They also have a Covid-update section where you can find up to date information about impacts and also opportunities. For more info visit [www.solas.ie/information-covid-19/](http://www.solas.ie/information-covid-19/)

## THE DEFENCE FORCES

Recruitment competitions are held as required for the Defence Forces. Visit their website for more information - [www.military.ie/en/](http://www.military.ie/en/)

## An Garda Síochána

To register your interest you must have a User Account on [www.publicjobs.ie](http://www.publicjobs.ie). If you have not already done so, you must register as a New User to create your Profile. Once registered, you can set up a job alert for positions within An Garda Síochána. In the section Create Job Alert, under Job Category, select Security/Emergency Services and Sub Category Garda then "Add alert". Candidates should not confuse registering (Creating a Profile) and setting up a job alert with submitting an application. Once the position is advertised you must then access the application form, complete and submit it.





# POST LEAVING CERTIFICATE COURSES

Colleges of Further Education offer PLC courses mostly accredited by FETAC. These are designed to prepare students for direct employment, or act as a pathway to higher education.

## CORK PLC COLLEGES

**Cork College of Commerce** - Morrisons Island, Cork.  
Tel: 021 422 2100 / Mail: [info@corkcollegeofcommerce.ie](mailto:info@corkcollegeofcommerce.ie) /  
Web: [corkcollegeofcommerce.ie](http://corkcollegeofcommerce.ie)  
See for West Cork Campus at Skibbereen.

**Colaiste Stiofain Naofa** - Tramore Road, Cork.  
Tel: 021 496 1020 / Mail: [info@csn.ie](mailto:info@csn.ie) / Web: [csn.ie](http://csn.ie)

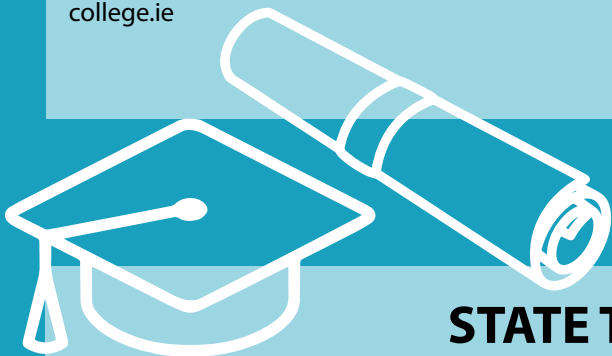
**St. John's Central College** - Sawmill St, Cork City  
Tel: 021 425 5500 / Mail: [info@stjohnscollege.ie](mailto:info@stjohnscollege.ie)  
Web: [stjohnscollege.ie](http://stjohnscollege.ie)

**City North College of Further Education** - Hollyhill, Knocknaheeny,  
Cork Tel: 021 439 1782 / Mail: [info@citynorthcollege.ie](mailto:info@citynorthcollege.ie) /  
Web: [citynorthcollege.ie](http://citynorthcollege.ie)

## NORTH & EAST CORK PLC COLLEGES

**Carrignafof Community College** - Cobh, Co. Cork.  
Tel: 021 481 1325 / Mail: [cobhcc@eircom.net](mailto:cobhcc@eircom.net) / Web: [cobhcommunitycollege.com](http://cobhcommunitycollege.com)

**Mallow College of Further Education** - Mallow, Co. Cork.  
Tel: 022 43 309 / Mail: [info@mallowcollege.ie](mailto:info@mallowcollege.ie) / Web: [mallowcollege.ie](http://mallowcollege.ie)



## WEST CORK PLC COLLEGES

**Clonakilty College of Further Education** - St. Fachna's Centre,  
Casement Park, Clonakilty, Co. Cork  
Tel: 086 020 4681 / Mail: [clonccof@eircom.net](mailto:clonccof@eircom.net)

**Maria Immaculata Community College** - Bantry Rd, Underhill,  
Dunmanway, Co. Cork  
Tel: 023 885 6030 / Mail: [miccinfo@corketb.ie](mailto:miccinfo@corketb.ie)  
Web: [www.micc.ie](http://www.micc.ie)

**College of Commerce (West Cork Campus)** - 2 North St,  
Gortnaclohy, Co. Cork  
Tel: 028 21 644 / Mail: [westcorkcampus@ccoc.ie](mailto:westcorkcampus@ccoc.ie) / Web:  
[corkcollegeofcommerce.ie](http://corkcollegeofcommerce.ie)

**McEgan College of Further Education** - Macroom, Co. Cork  
Tel: 026 41 076 / Mail: [info.office@mcegan.ie](mailto:info.office@mcegan.ie) / Web:  
[mcegan.ie](http://mcegan.ie)

**Kinsale College of Further Education** - Bandon Rd,  
Blackhorsefield, Kinsale, Co. Cork Tel: 021 477 2275 / Mail:  
[info@kinsalecollege.ie](mailto:info@kinsalecollege.ie) / Web: [kinsalecollege.ie](http://kinsalecollege.ie)

## INDEPENDENT THIRD LEVEL COLLEGES

**Griffith College** - Wellington Rd, Cork  
Tel: 021 450 7027 / Mail: [admissions.gcc@griffith.ie](mailto:admissions.gcc@griffith.ie) / Web:  
[griffith.ie](http://griffith.ie)

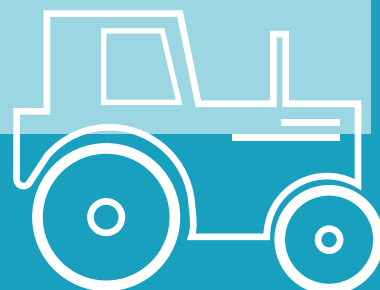
# STATE TRAINING AGENCIES

**Teagasc (The Agriculture and Food Development)**  
Also see CAO for related courses through CIT & UCC. /  
Address: Teagasc, Moorepark Advisory Office, Fermoy,  
Co. Cork.  
Tel: 025 42244 / Mail: [info@teagasc.ie](mailto:info@teagasc.ie) / Web: [teagasc.ie](http://teagasc.ie)

**Cork Training Centre - CETB  
(Cork Education & Training Board)**  
A range of training and apprenticeships / Address: 21  
Lavitt's Quay, Centre, Cork. Tel: (021) 4907100 / Mail:  
[info@corketb.ie](mailto:info@corketb.ie) / Web: [corketb.ie](http://corketb.ie)

**National Maritime College of Ireland (NCMI)**  
Applications for all degree programmes made through  
the CAO / Address: Ringaskiddy, Co. Cork  
Tel: 021 433 5600 / Mail: [reception@nmci.ie](mailto:reception@nmci.ie)  
Web: [nmci.ie](http://nmci.ie)

**Bord Iascaigh Mhara (BIM) - Irish Sea Fisheries Board**  
Address: National Fisheries College, Castletownbere, Co.  
Cork / Tel: 027 71230 / Mail: [nfcicastletownbere@bim.ie](mailto:nfcicastletownbere@bim.ie)  
Web: [nfcicastletownbere@bim.ie](mailto:nfcicastletownbere@bim.ie)



# GRANTS



## THE STUDENT GRANT SCHEME

Student Universal Support Ireland (SUSI) is Ireland's national awarding authority for all further and higher education grants. SUSI offers funding to eligible students, in approved full time third level courses.

## ELIGIBILITY FOR SUSI GRANTS

Residence & Nationality:

You must be an Irish, EU, EEA or Swiss National (or have specific leave to remain in the State), and you must be ordinarily resident in Ireland the EU, EEA or Switzerland for 3 of the last 5 years. If you were resident outside the Irish State longer than the period stipulated above, it may affect the type of funding you could receive.

Course: You must be attending an approved course in an approved institution, and those who secure a course place will have met the academic requirements.

Means: Grants are subject to a means test. Dependent Applicants will be assessed on their parent's / legal guardian's income, and your own income (if any).

Maximum Period of Grant Assistance: Funding is only available to students for a certain amount of years and depends on their previous education. For a detailed breakdown of maximum periods for assistance in relation to PLC and Undergraduate courses of study, visit [susi.ie/eligibility/maximum-periods-of-study/](http://susi.ie/eligibility/maximum-periods-of-study/)

## STUDENT GRANT BREAKDOWN

**Part 1.** Maintenance Grant: A contribution towards living costs of a student.

**Part 2.** Fee Grant



## NON-ADJACENT & ADJACENT GRANT RATES:

Maintenance grants are payable at either adjacent or nonadjacent rates. The non-adjacent rate applies where normal residence is 45 kilometres or more from the college. The adjacent rate is payable in all other cases.

## SPECIAL RATE GRANT:

To be eligible for the Special Rate a student's family income must meet the following conditions;

Your total reckonable household income must not exceed €24,500

On 31st December of the previous year to your application, the household income must include an eligible long-term Department of Employment Affairs and Social Protection payment.

Number of dependent children	Special Rate of maintenance	Standard Rate 100% rate of maintenance Full Fee Grant	Standard Rate 75% rate of maintenance Full Fee Grant	Standard Rate 50% rate of maintenance Full Fee Grant	Standard Rate 25% rate of maintenance Full Fee Grant	No maintenance 50% tuition fees or 100% student contribution	No maintenance 50% student contribution	Post Grad fee contribution (standard rate)
Less than 4	€24,500	€39,875	€40,970	€43,380	€45,790	€49,840	€54,240	€31,500
4 to 7	€24,500	€43,810	€45,025	€47,670	€50,325	€54,765	€59,595	€34,615
8 or more	€24,500	€47,575	€48,890	€51,760	€54,630	€59,455	€64,700	€37,580

Plus increment for each additional relevant person/student

+ €4,830	+ €4,670	+ €4,670	+ €4,670	+ €4,830	+ €4,830	+ €4,930
----------	----------	----------	----------	----------	----------	----------

## RATES OF MAINTENANCE GRANT 2020 - 2021

### Annual Rates

	Non-Adjacent Rate	Adjacent Rate
Special rate of maintenance	€ 5,915	€ 2,375
Standard rate - Full Maintenance (100%)	€ 3,025	€ 1,215
Standard rate - Part Maintenance (75%)	€ 2,270	€ 910
Standard rate - Part Maintenance (50%)	€ 1,515	€ 605
Standard rate - Part Maintenance (25%)	€ 755	€ 305

### **FEES GRANT:**

The Fees Grant will cover;

- All or part of a student's tuition fees
- All or part of the 'student contribution'
- Costs of essential field trips

### **Qualifying for the fee grant**

This type of grant is means tested and follows a lot of the same conditions as the maintenance grant. Generally, if you qualify for a maintenance grant, you will also qualify for the fee grant. You must be in an approved undergraduate or postgraduate course in an approved institution.

### **APPLICATION PROCEDURE**

Apply online at [www.susi.ie](http://www.susi.ie). If eligible, online applications are currently still being accepted by SUSI and should be made as soon as possible. Use Eligibility Reckoner on SUSI website, for quick assessment of eligibility. There is also an Online Tracker available to check the status of application and a second pin number for security.

### **SUSI - FURTHER INFORMATION:**

For more information on eligibility and the SUSI grant application process visit [susi.ie](http://susi.ie)

## **STUDENT ACCOMMODATION**

### **IMPORTANT NOTE on potential changes due to COVID-19:**

Before looking into your accommodation for the academic year, you should contact the institution you will be attending, to check if any changes to the delivery on courses have been implemented in light of the COVID-19 pandemic.

### **FINDING ACCOMODATION:**

If you have gained a place, contact your college as soon as possible before the start of the academic year for advice and support in accommodation locally. Some college Students Unions provide lists of suitable/vacant accommodation. Also check the college website. Other useful websites include:

[daft.ie](http://daft.ie) / [let.ie](http://let.ie) / [eazycork.com](http://eazycork.com) / [rent.ie](http://rent.ie) / [property.ie](http://property.ie)



## **STUDENT SUPPORT**

There is a lot of help and support available to you when you start college - you just need to ask:

**Admissions Officer:** Often your first point of contact. They advise on the administration of college life, such as deferring courses, changing courses etc.

**Access Officer:** Assists students on various issues such as financial problems, education worries and facilities / resources for people with disabilities (some colleges have separate disability officers).

**Student Services Officer:** Plans for students needs such as orientation for newcomers, counselling, mentoring etc.

**Student Union:** Represents students and advises on student issues.

# YMCA IRELAND'S ADVOCACY & YOUTH INFORMATION SERVICE

Our service connects young people, parents and those who work with young people with a professional Youth Information Officer who provides personalised information.



The service is a great way for you to get more information, learn about new opportunities and talk through your own situation with someone who can help.

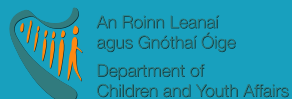


**YIChat Service**      [www.ymca-ireland.net/question](http://www.ymca-ireland.net/question)  
Monday-Friday 16:00 - 20:00 (except for public holidays)  
or you can leave a message outside of those hours and receive a reply by email

**West Cork Helpline**      **023 8844009**  
Wednesdays, Fridays & Saturdays 14:00 - 16:00  
You can also contact us to set up an appointment at a time that suits you

**Cork City Online**      [youthinfo@ymca-ireland.net](mailto:youthinfo@ymca-ireland.net)  
Just contact us to set up an appointment at a time that suits you

**Follow us** on  &       **@yiyoungevoices**  
Find out about the latest online/ offline opportunities, Youth Advocacy programmes and future Youth Information activities at Youth Innovation Space, YMCA, 11/12 Marlboro Street, Cork



# Y M C A Y O U T H I N F O

**WHILE EVERY EFFORT HAS BEEN MADE TO ENSURE THAT THE INFORMATION PROVIDED IN THIS DOCUMENT IS ACCURATE, THE YOUTH INFORMATION SERVICES CANNOT BE RESPONSIBLE FOR LIABILITY INCURRED OR LOSS SUFFERED AS A CONSEQUENCE OF RELYING ON THAT MATTER.**